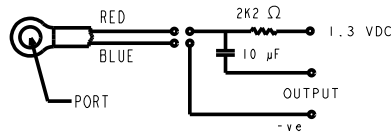
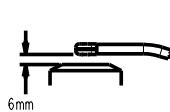


NOTES:

- MICROPHONE TO BE FUNCTIONAL WITH 10 VDC SUPPLY.
- SENSITIVITY VALUES INDICATED ON THIS SPECIFICATION ARE VALID AT 50% HUMIDITY.
- SENSITIVITY

| FREQUENCY | MIN   | NOM   | MAX   |
|-----------|-------|-------|-------|
| 300       | -64.0 | -60.0 | -56.0 |
| 1000      | -64.0 | -60.0 | -56.0 |
| 4000      | -62.0 | -58.0 | -54.0 |

- TEST CONDITIONS:  
HEAD OF BOOM EXPOSED TO 94 dB SPL SWEPT SOUND FIELD AT 6mm FROM VOICE APERTURE.  
ARTIFICIAL VOICE: B & K 4227 MOUTH SIMULATOR.
- FOR MICROPHONE CAPSULE SPEC. SEE NR-23160-000 SHEET 2.1



LEAD IDENTIFICATION & TEST CIRCUIT

| Revision | C.O. #    | Implementation Date | RELEASE LEVEL | REVISION |
|----------|-----------|---------------------|---------------|----------|
| E        | C10109726 | 6-23-09             | Active        | E        |
| D        | C10107745 | 8-4-08              |               |          |

**KNOWLES ELECTRONICS**  
ITASCA, ILLINOIS U.S.A.

|  |  |         |         |
|--|--|---------|---------|
| WHEN TEST LIMITS ARE USED TO ESTABLISH INCOMING INSPECTION ACCEPTANCE/REJECTION CRITERIA, CORRELATION OF TEST EQUIPMENT WITH KNOWLES IS ALSO REQUIRED FOR ELIMINATION OF EQUIPMENT AND TEST METHOD VARIATION |  | DR. BY  | DATE    |
|  |  | TT      | 3-4-08  |
| TITLE: <b>BOOM MICROPHONE FB-DW-23249-000</b>  |  | CK. BY  | DATE    |
| PERFORMANCE SPECIFICATION  |  | GJP     | 3-27-08 |
| SHT 2.1  |  | APP. BY | DATE    |
|  |  | GJP     | 3-27-08 |